

Teaching Linked Data to Librarians: A Discussion of Pedagogical Methods

Sonoe Nakasone, Jacob Shelby, Allison Jai O'Dell



Acquisitions & Discovery = Acquisitions + Cataloging & Metadata

**Monographs
Unit**

Serials Unit

**Data Projects
& Partnerships
Unit**

Acquisitions & Discovery = Acquisitions + Cataloging & Metadata

Monographs
Unit

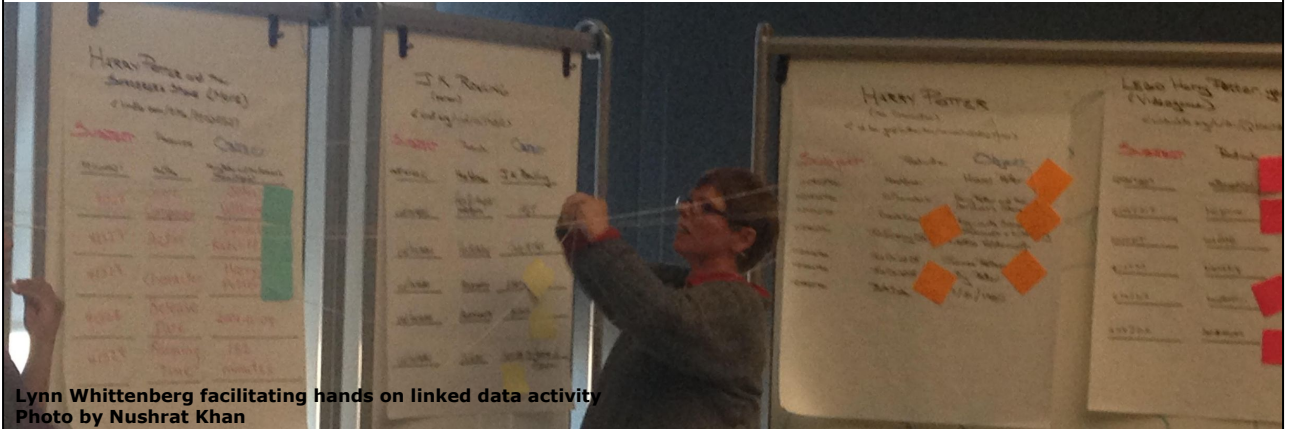
Seri

Data Projects & Partnerships Unit

- Administrative Support
- Technical Support
- Metadata exploration

Department Retreat

Presentations and hands on activity : <https://goo.gl/bNIAZU>



Department retreat

- Presentations
- Hands on -- readMe file with explanation and instruction

Linked Data Bibliography

Contents

[Webinars](#)

[Articles](#)

[Presentations](#)

On citing Webinars and Web videos - <https://ssw.unc.edu/files/pdf/CitingWebinars2013.pdf>

Webinars

1. Cole, T. W., Han, M. K., & Jett, J. (2016, June 8). *Linked Open Data for Digitized Special Collections* [Webinar]. Retrieved from <https://goo.gl/t2lMD2>
2. DuCharme, B. (2014, February 11). SKOS, SPARQL, and Vocabulary Management [Webinar]. Retrieved from <http://ala.adobeconnect.com/p1n8obr32vd/>
3. Dunsire, G. (2016, July 5). Quo Vadis - Getting There with Linked Data [Webinar]. Retrieved from <https://goo.gl/PqXGN7>
4. Fallgren, N., Nelson, J., & Lorimer, N. (2015, April 8). *Experimenting with BIBFRAME: Reports from Early Adopters* [Webinar]. Retrieved from http://www.niso.org/news/events/2015/webinars/bibframe_adopters/
5. Fay, R. & Murray, P. (2013, May 1). Linked Data: What it Means for the Future of Libraries [Webinar]. Retrieved from <http://yrcsis.adobeconnect.com/p51vxi5wfncl/>
6. Fons, T., Harper, C., & Schreur, P. (2014, June 02). *Tracing the Evolution of Linked Data* [Webinar]. Retrieved from http://www.oclc.org/en-US/events/2014/C1_Linked_Data_webinar_June1_20141.html
7. Gonzalez, G. & Penka, J. (2016, January 20). Linked Data 499: Your Action Plan [Webinar]. Retrieved from <http://link.sirsiidynix.com/tmlq106MW0m900JE000dJ>
8. Gruber, E. (2015, May 13). *From 0 to 60 on SPARQL queries in 50 minutes* [Webinar]. Retrieved from <https://www.asist.org/events/webinars/dcmi-webinar-from-0-to-60-on-sparql-queries-in-50-minutes/>
9. Guha, R. V., Swick, R., Ford, K., Story, H., Lemyre, P., & DuCharme, B. (2014,

<https://goo.gl/A90Gxu>

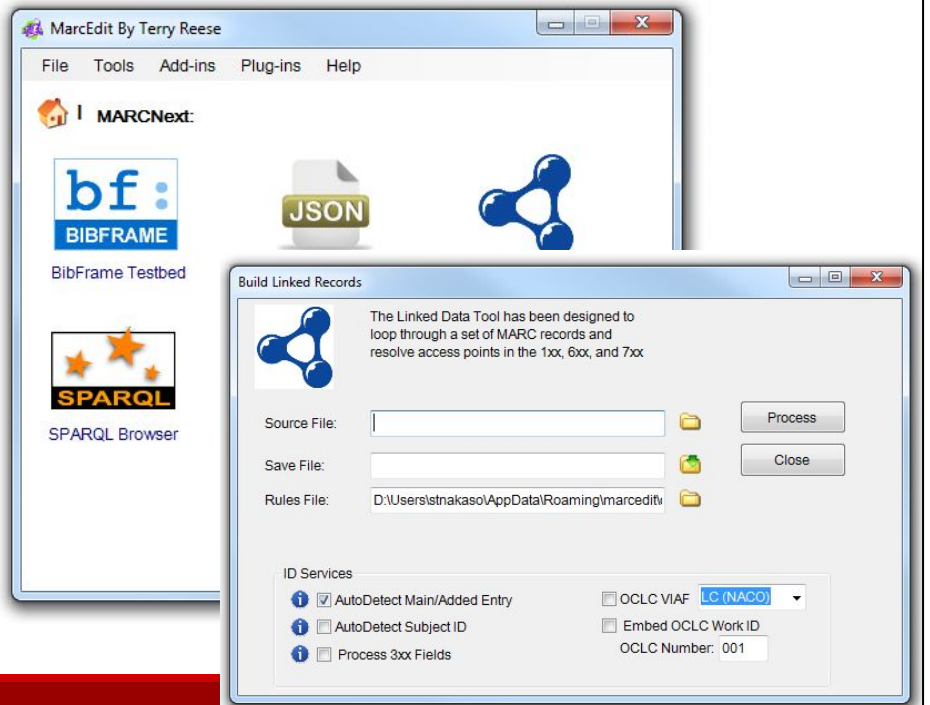
URIs

1xx

33x

6xx

7xx



URIs in MARC

- MarcEdit
- SIRSI off set numbers in batch? -- future investigation

Schema.org + JSON-LD

- Goal: staff to become familiar with the Schema.org vocabularies and JSON-LD data format
 - <http://tinyurl.com/ncsuSchemaTraining>

```
{
  "@context": "http://schema.org/",
  "@type": "Library",
  "name": "D.H. Hill Library",
  "address": {
    "@type": "PostalAddress",
    "streetAddress": "2 Broughton Drive",
    "postOfficeBoxNumber": "Campus Box 7111",
    "addressLocality": "Raleigh",
    "addressRegion": "NC",
    "postalCode": "27695-7111"
  },
  "telephone": "9195153364",
  "email": "Library_reference@ncsu.edu",
  "logo": "https://www.lib.ncsu.edu/website/images/logo_small.png",
  "geo": "35.787512, -78.669613",
  "hasMap": "https://www.lib.ncsu.edu/libmaps",
  "photo": "https://www.lib.ncsu.edu/sites/default/files/styles/large/public/CAMPUS_DHHill.0086_small_0.jpg",
  "description": "The D. H. Hill Library is NC State University's main library, located on the north campus. The library features the Learning Commons, one of the top student destinations on campus for collaboration, study, and access to technology; the Special Collections Research Center; the Digital Media Lab; a coffee bar and ice cream shop; and the majority of the NCSU Libraries' collection of over 4.5 million items.",
  "url": "http://www.lib.ncsu.edu/hours/hill/general",
  "sameAs": [
    "http://dbpedia.org/resource/D._H._Hill_Library",
    "http://viaf.org/viaf/153602038",
    "http://sws.geonames.org/7194765/",
    "http://id.loc.gov/authorities/names/n80050833"
  ]
}
```

type	name	StreetAddress	postOfficeBox Number	addressLocality	addressRegion
http://schema.org/Library	D.H. Hill Library	2 Broughton Drive	Campus Box 7111	Raleigh	NC

This training was to prepare our staff for a special collections project. The goal of the training was for staff to become familiar with the Schema.org vocabularies and the JSON-LD data format. The training was broken into two sessions: an information session and a hands-on exercise session. One part of this training was to convert a spreadsheet of data about one of the NCSU libraries (Hill Library) into Schema.org/JSON-LD. This training presents an example of how we up-scale training when it makes sense. A version of this training was presented to all the librarians in the department, and we might distribute some of this to the whole department in the future.

Linked Data Workshops

- Up-scaling opportunity
- Primary audience: NCSU Libraries staff
- Linked data basics, specific topics, speakers, hands-on workshops

One of our NCSU Fellows, Nushrat Khan, and I have been planning a series of linked data workshops. This is another up-scaling opportunity to share department training with the whole library. The primary audience for this workshop series will be NCSU Libraries staff. We plan to present a session on linked data basics, then expanding into more specific topics, inviting professionals from other disciplines to share how they use linked data in their work, and facilitating hands-on workshops to give participants a chance to apply linked data.

Triplestore Playground

- Goal: give staff an environment to apply linked data concepts and experiment/explore
- Working with IT to find the right solution for our needs
 - Inferencing capabilities
 - Meets security requirements
 - Robust permissions

We are currently in the works of setting up a triplestore/SPARQL endpoint environment. The goal of this endeavor is to give library staff an environment to apply linked data concepts they have been learning and to experiment/explore. We are working with library IT to find the right solution for our needs. Some examples are trying to find a solution that has inferencing capabilities, meets our security requirements, and has robust permissions so we can set a variety of profiles for our environment.

Linked Data Webinars

6/28/2016	Making Connections - Creating Linked Open Library Data	Archive / Slides
7/12/2016	Creating and Utilizing Memorandums of Understanding (MOUs)	Archive / Workbook
7/13/2016	BLUEcloud eRM Product Overview	Archive
7/13/2016	WorldCat Data Sync Collections in WorldShare Collection Manager	Archive / WorldShare Collection Manager Training Page / Data Sync Collections Documentation
7/18/2016	Linked Open Data for Digitized Special Collections	Archive
7/19/2016	NISO Transfer and Transfer Alerting Service	Archive & Slides
7/27/2016	Quo Vadis? Getting There with Linked Data	Archive / Slides
9/1/2016	Inspired Team—How to Create a Motivating Workplace and Engage your Employees	Archive
9/7/2016	Ex Libris Support Portal and Knowledge Center Demo	
9/15/2016	FOLIO: Reimagining Library Technology - Part 1	Archive
9/29/2016	Linking Locally: A Technical Tour of the UNLV LOD Project	Archive / Slides
10/11/2016	Technical Services Skills for the Future	Archive / Slides

The Acquisitions & Discovery Department has an active webinar community. We have a “webinar wrangler” (me) who sifts through webinars that might be relevant to our department, solicits interest from the department, and sets viewings of the webinar archives. One specific interest is linked data, so I try to find linked data webinars. One example of this is the ALCTS MARC to BIBFRAME series. In special cases, when we have a lot of interest in a particular webinar, we’ll try to schedule a social viewing of the webinar where snacks and coffee are provided. We also document all webinars that have been viewed by the department within the past six months so people who are unable to attend the viewings can still view the webinars.